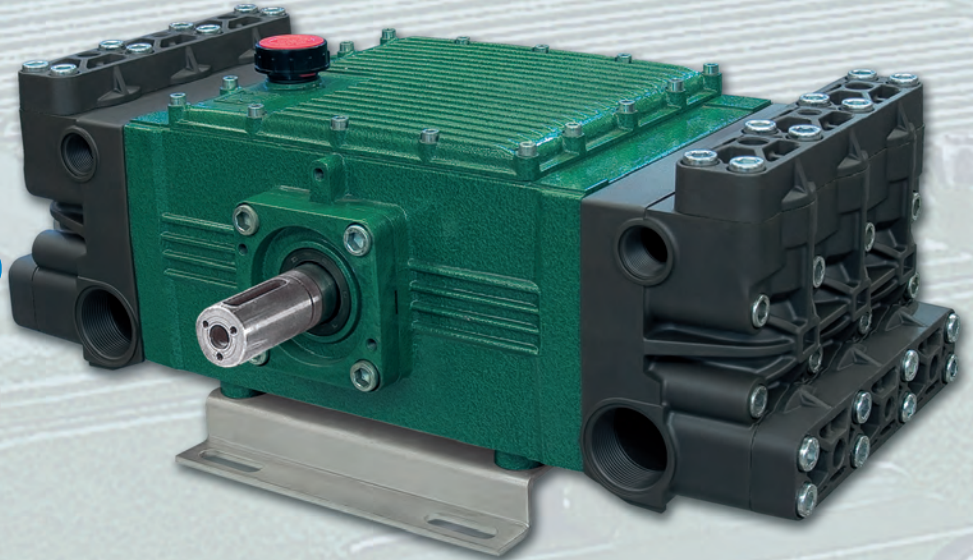


highest quality state of the art CUSTOMER QUALITY PRECISION

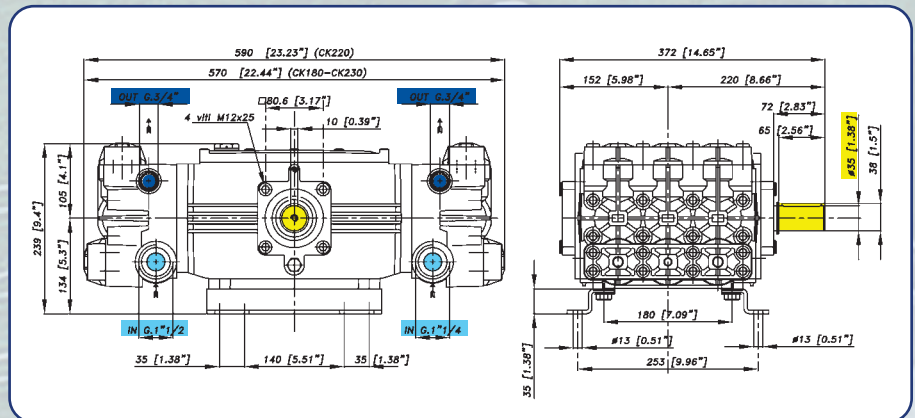
CK6 PP

CARATTERISTICHE - SPECIFICATIONS

CK PP-6			
IN	DIAMETER	\varnothing	(N°2) 1" 1/2 BSP
	PRESS.	Min.	- 0.2 bar - 3 PSI
		Max.	6 bar 87 PSI
TEMP.	Max.	60° C. 140° F.	
OUT	DIAMETER	\varnothing	(N°2) 3/4 BSP
SHAFT		\varnothing	35 mm
OIL	SAE 30 30 W	2.8 litri	0.74 U.S.G.
PESO WEIGHT	Kg lbs	45 / 99	



OPTIONAL



CARATTERISTICHE - FEATURES

PERFORMANCE CHART

MODELLO MODEL CODICE CODE	MAX L/min GPM	PRESS		RPM 550				RPM 700				RPM 900				PIST. CORSA PLUNG. STROKE	
		Bar	PSI	L/min	GPM	KW	HP	L/min	GPM	KW	HP	L/min	GPM	KW	HP	Dia. mm	mm
CK 180 PP 76.7304.97.3	174 45.9	40	580	112	29.5	8.8	11.8	139	36.7	10.9	14.6	174	45.9	13.6	18.3	45	22
		50	725	111	29.4	10.9	14.6	138	36.6	13.6	18.2	173	45.6	17.0	22.7		
		60	870	111	29.2	13.0	17.5	138	36.4	16.2	21.8	172	45.4	20.2	27.2		
CK 230 PP 76.7305.97.3	221 58.4	40	580	142	37.6	11.2	15.0	177	46.8	13.9	18.6	221	58.4	17.4	23.3	45	28
		50	725	142	37.4	13.9	18.6	176	46.5	17.3	23.2	220	58.1	21.6	28.9		
		60	870	141	37.2	16.6	22.3	175	46.3	20.6	27.7	219	57.8	25.8	34.6		

CARATTERISTICHE - FEATURES

PERFORMANCE CHART

MODELLO MODEL CODICE CODE	MAX L/min GPM	PRESS		RPM 450				RPM 500				RPM 550				PIST. CORSA PLUNG. STROKE	
		Bar	PSI	L/min	GPM	KW	HP	L/min	GPM	KW	HP	L/min	GPM	KW	HP	Dia. mm	mm
CK 220 PP 76.7303.97.3	203 53.8	40	580	175	46.4	13.8	18.5	191	50.3	15.0	20.1	203	53.8	16.0	21.4	45	40
		50	725	175	46.1	17.1	23.0	190	50.1	18.6	25.0	202	53.5	19.9	26.7		
		60	870	174	45.9	20.5	27.4	189	49.8	22.2	29.8	201	53.2	23.7	31.8		